

Specification Change Notice

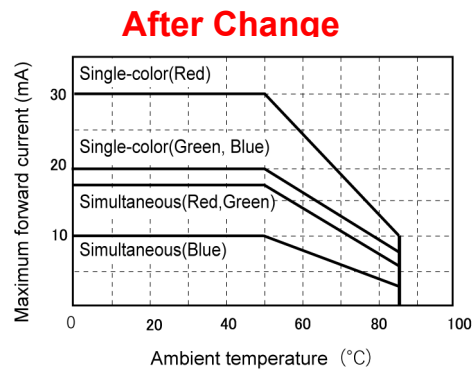
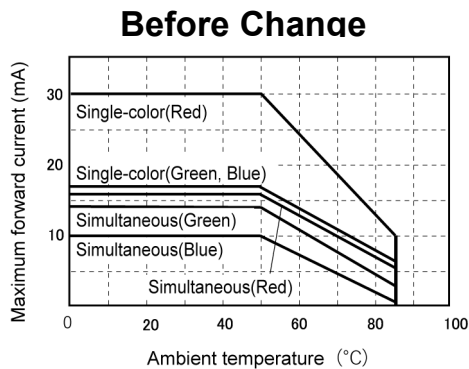
KA Series Illuminated Pushbutton Switch 【LED : Multi-Color (22)】

We would like to inform you that specification of LED (Multi-Color) will be changed after November 2, 2026. No change in external dimensions and part number. The details are as follows.

●LED Ratings

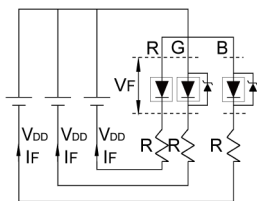
		Before Change			After Change		
		Multi-Color			Multi-Color		
		Red	Super-Green	Super-Blue	Red	Super-Green	Super-Blue
Max Forward Current	IFM(mA)	50	35	25	50	35	30
Power Dissipation	(mW)	4	4	4	127	124	97
		150(Simultaneous lighting)			150(Simultaneous lighting)		
Reverse current rating	IR (mA)	—	—	—	85		
Forward voltage	VF (Typ.) (V)	2.2	3.2	3.2	2.2	3.2	2.9
Dominant wavelength	λd (nm)	622	530	468	622	530	468
Forward current under the above conditions (mA)		20	20	20	20	20	20
Pulse Lighting	Pulse Width PW (μs)	10 ⁴			10 ⁴		
	Duty Ratio DR	10 ⁻¹			10 ⁻¹		
	Allowable forward current IFP (mA)	150	110	100	150	110	100

●Maximum forward current – Ambient temperature



●Wiring Diagram

Before Change



After Change

