

Specification Change Notice

LL Series Indicator 【LED : Multi-Color (22)】

We would like to inform you that specification of LED (Multi-Color) will be changed after November 2, 2026. No change in external dimensions and part number. The details are as follows.

●NON-RESISTOR (EXTERNAL RESISTOR)

Before Change

LED Color		Red	Super-Green	Super-Blue
Max Forward Current	IFM(mA)	50	35	25
Power Dissipation	(mW)	254	248	178
		300(Simultaneous lighting)		
Reverse current rating	IR (mA)	—	—	—
Forward voltage	VF (Typ.) (V)	4.4	6.4	6.4
Dominant wavelength	λd (nm)	623	532	465
Forward current under the above conditions		20	20	20
Pulse Lighting	Pulse Width PW (μs)	10^4		
	Duty Ratio DR	10^{-1}		
	Allowable forward current			
	I _{FP} (mA)	150	110	80

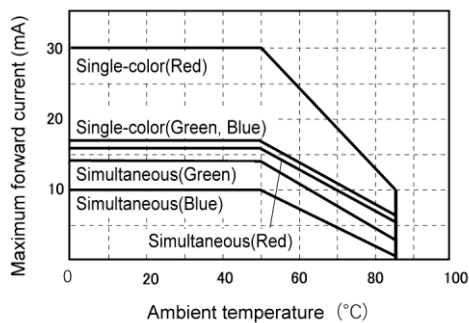
After Change

LED Color		Red	Super-Green	Super-Blue
Max Forward Current	IFM(mA)	50	35	30
Power Dissipation	(mW)	254	248	194
		300(Simultaneous lighting)		
Reverse current rating		85		
Forward voltage	VF (Typ.) (V)	4.4	6.4	5.8
Dominant wavelength	λd (nm)	623	532	465
Forward current under the above conditions		20	20	20
Pulse Lighting	Pulse Width PW (μs)	10^4		
	Duty Ratio DR	10^{-1}		
	Allowable forward current			
	I _{FP} (mA)	150	110	100

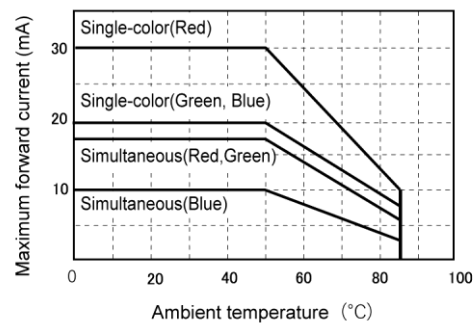


●Maximum forward current – Ambient temperature

Before Change

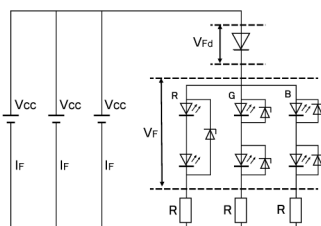


After Change



●Wiring Diagram

Before Change



After Change

