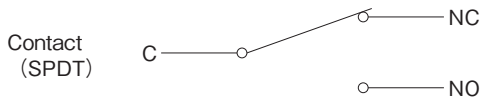
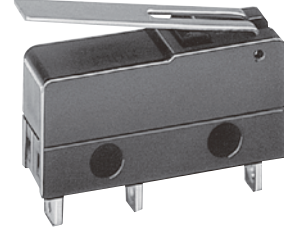


SL Micro Switch

Long Life, Very small type.

- Using coil spring, it gets much longer life. Mechanical life : 10,000,000 operations(min.).
- Offered with a choice of various O.F., Actuators, Terminals.



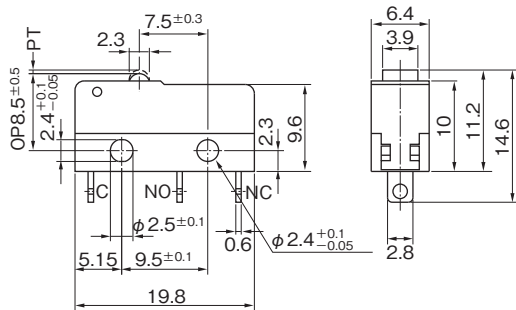
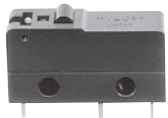
SPECIFICATIONS

Contact	Silver
Electrical Rating	AC125V, 250V 5A (Res. Load)
Insulation Resistance	More than 100MΩ, at DC 500V Megger
Dielectric Strength	AC 1000V RMS between NC and NO terminal AC 1500V RMS between terminals and ground 50/60Hz for 60 sec. at normal temperature and humidity
Contact Resistance	Less than 30mΩ (at Initial) at DC6V1A
* Withstand Shock	30G (min.)
* Withstand Vibration	1.5mm double amplitude, frequency 10~55Hz in 2 hours
* Operating Speed	0.1mm/sec~1m/sec
Operating Frequency	600 times per min.
Mechanical Life	100,000,000 operations (min.)
Electrical Life	50,000 operations (min.) (at rated load)
Ambient Temperature	-15°C~85°C
Ambient Humidity	85%RH (max.)

*Shows specifications for Pin Plunger type.

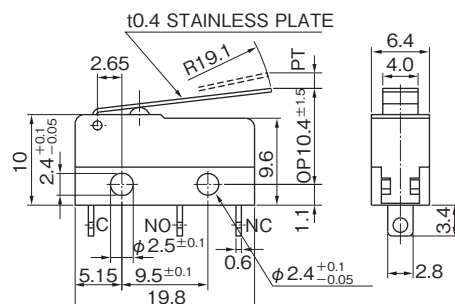
DIMENSIONS

● SL-□N Pin Plunger



Type	Operating Characteristics				
	OF (g) Max.	RF (g) Min.	PT (mm) Max.	OT (mm) Min.	MD (mm) Max.
SPDT					
SL-1N	0.98N [100gf]	0.15N [15gf]	0.8	0.3	0.3
SL-2N	1.47N [150gf]	0.22N [22gf]	0.8	0.3	0.3
SL-3N	0.78N [80gf]	0.12N [12gf]	0.8	0.3	0.3
SL-4N	0.45N [45gf]	0.07N [7gf]	0.8	0.3	0.3

● SL-□NW1 Standard Hinged Lever

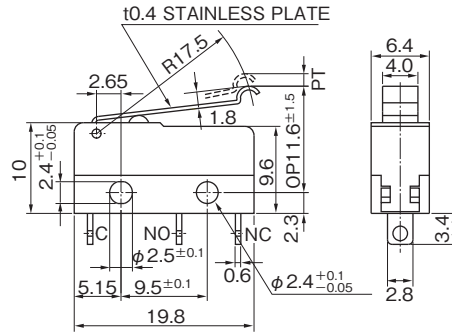
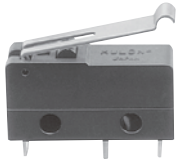


Type	Operating Characteristics				
	OF (g) Max.	RF (g) Min.	PT (mm) Max.	OT (mm) Min.	MD (mm) Max.
SPDT					
SL-1NW1	0.33N [34gf]	0.05N [5gf]	3.2	1.2	1.2
SL-2NW1	0.49N [50gf]	0.07N [7gf]	3.2	1.2	1.2
SL-3NW1	0.25N [25gf]	0.04N [4gf]	3.2	1.2	1.2
SL-4NW1	0.15N [15gf]	0.02N [2gf]	3.2	1.2	1.2

Tolerance : ±0.4mm

DIMENSIONS

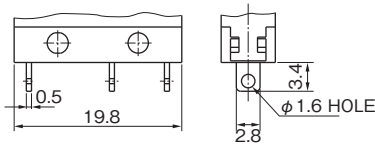
● SL-□NW3 Simulated Hinged Lever



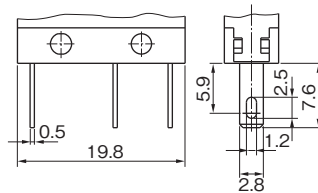
Type	Operating Characteristics				
	OF (g) Max.	RF (g) Min.	PT (mm) Max.	OT (mm) Min.	MD (mm) Max.
SL-1NW3	0.33N {34gf}	0.05N {5gf}	3.2	1.2	1.2
SL-2NW3	0.49N {50gf}	0.07N {7gf}	3.2	1.2	1.2
SL-3NW3	0.25N {25gf}	0.04N {4gf}	3.2	1.2	1.2
SL-4NW3	0.15N {15gf}	0.02N {2gf}	3.2	1.2	1.2

TERMINALS/DIMENSIONS

● Solder Terminal : No mark



● #110 Tab Terminal : Mark P



ORDERING CODE

SL - □ N □ □ □

● OF

1	Max. 0.98N {100gf}
2	Max. 1.47N {150gf}
3	Max. 0.78N {80gf}
4	Max. 0.45N {45gf}

● Terminals

None	Solder
P	#110 Tab

● Contact Materials

None	Silver
------	--------

● Actuator

None	Pin Plunger
W1	Standard hinged lever
W3	Simulated hinged lever

HANDLING HINTS

- When soldering iron of max. 60W for a maximum of 5 seconds on any terminals be careful to ensure that the iron does not touch the switch body.
- When fixing, use M2.3 screw and flat/spring washer and fix firmly. Moderate fixing torque is 0.294N-m {3kg-cm} .
- When mounting on metal body, it is recommended to use insulation cloth between switch and panel.
We provide exclusive insulation cloth for SL switch.